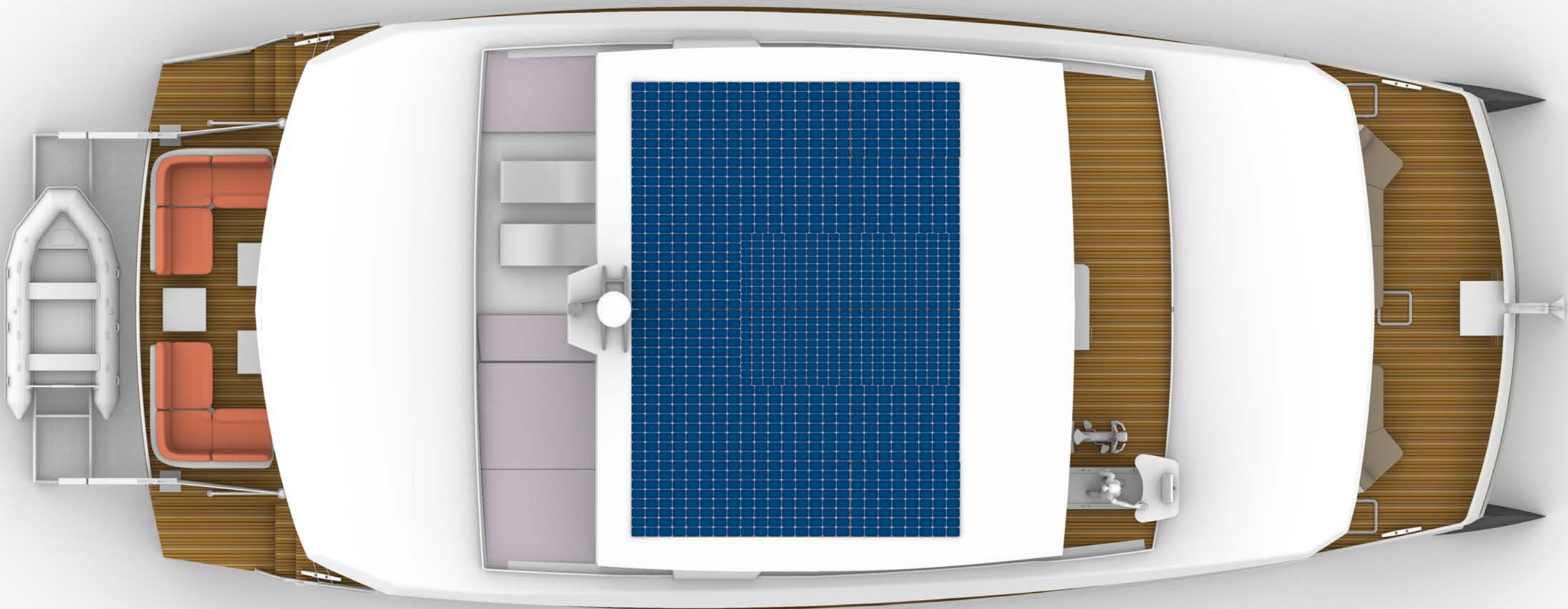
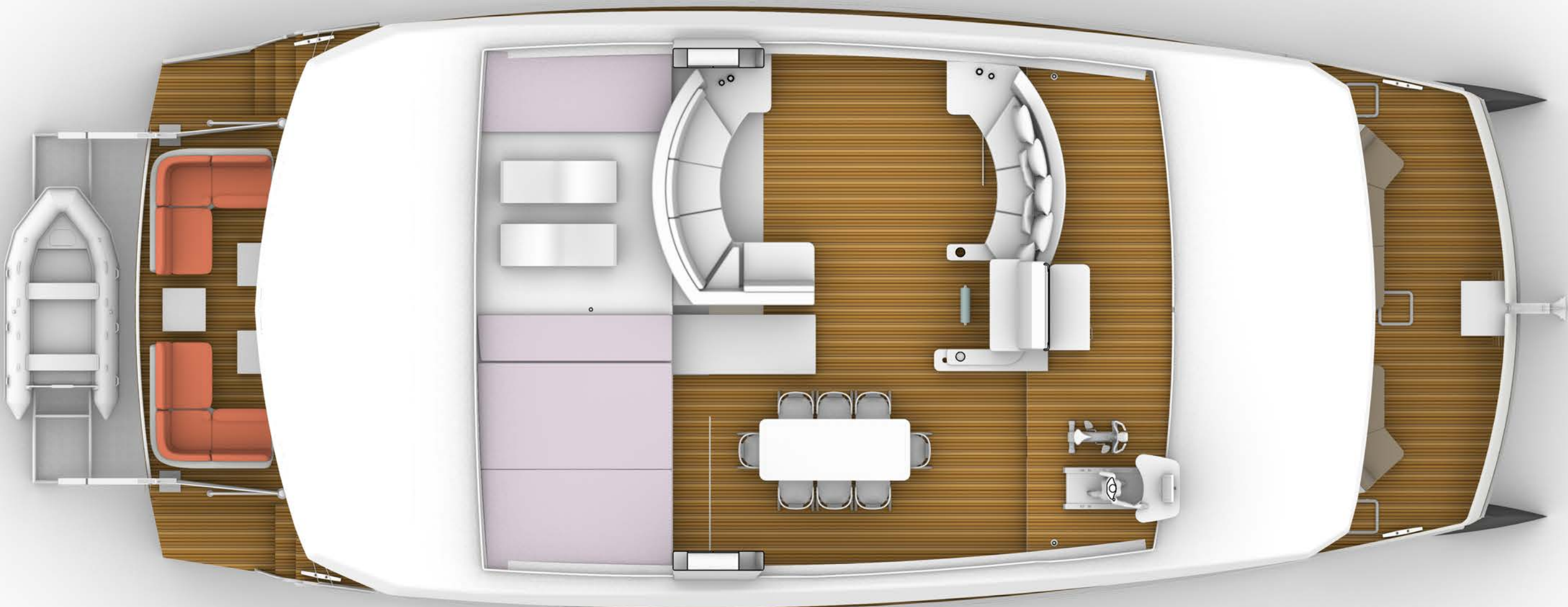
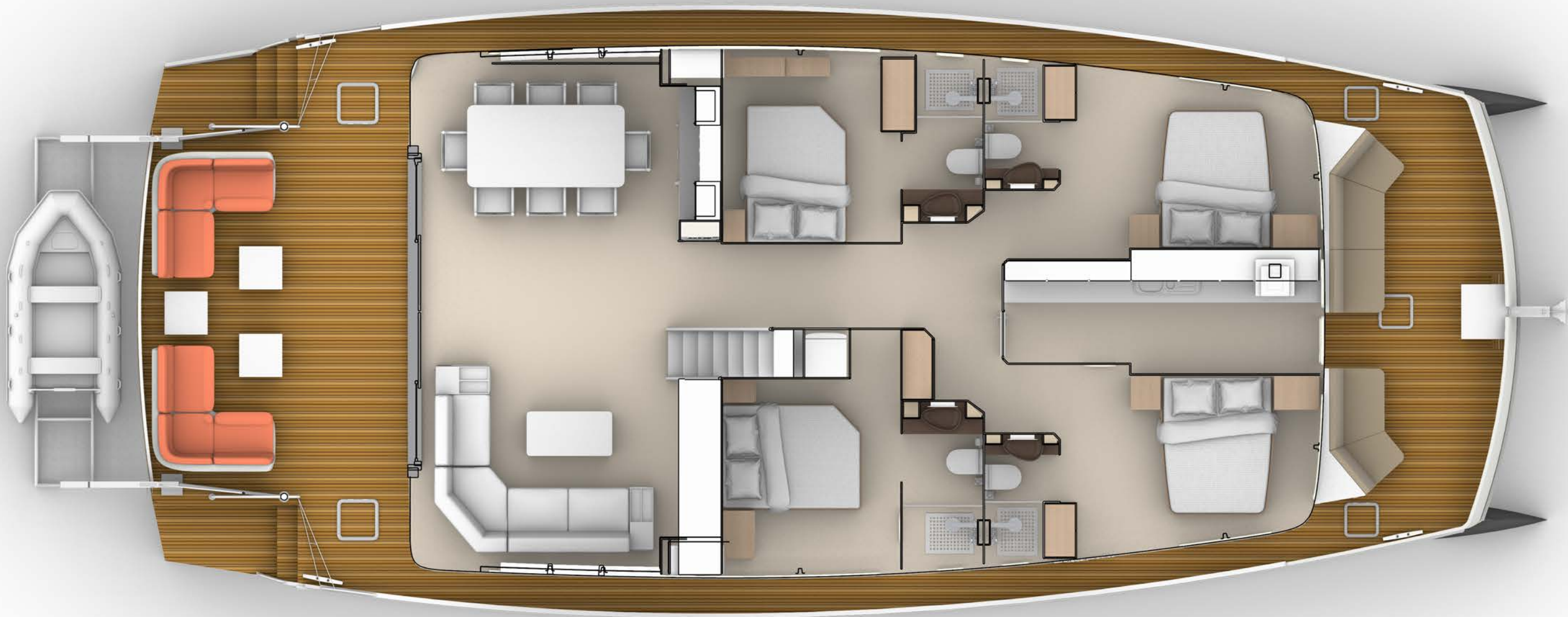


MM-66A









Short Specs:

Length Overall:	20,32mt – 66ft
Hull Length:	19,40mt – 63.77ft
Beam:	9,10mt - 29ft
Light Displacement:	24.000kg
Loaded:	30.000kg
Air Draft:	5,30mt – 17.4ft
Draft:	70-80cm – 2.74ft
Fuel Capacity:	1000lt – 264gal
Fresh Water Capacity:	1000lt – 264gal
Waste Water Capacity:	1000lt - gal
Propulsion:	2 x 230hp Nanni Diesel
Generator:	12kW
Solar Power:	5kW Peak/hr (Service)
Classification:	CE – Class B Recreational Craft
Registry:	U.K. (United Kingdom)